

Screen (Microphone) All-In-One Lift



- Full aluminum alloy frame
- Dual lead screw drive
- Integrated circuit system
- Smart control, with selectable function modules



Screen (Microphone) All-In-One Lift

The LCD screen base uses BOE's high-end series, with high definition; self-developed display driver module with high color accuracy; 170° wide viewing angle, ultra-narrow bezel, high contrast ultra-thin display. The lift uses a dedicated aluminum alloy profile frame, anodized, with fine sandblasting process. User-friendly button with LED backlight indication, designed for simplicity and ease of use. The internal lifting system is reliable, durable, and silent. In practical applications, various components can be added in a modular way, including but not limited to "DMB transmission module", "dual-sided screen", "conference discussion system, interactive system", and more. This series has strong scalability, meeting various application requirements of users. Applicable to paperless office systems, multimedia conference systems, TV conference systems, command and dispatch systems, production analysis systems, financial analysis systems, large conference systems, academic exchanges, information management, network office, and various exhibition and presentation fields. The whole machine has passed CCC and energy-saving certification. Equipped with power loop-out function, short circuit protection, and safe grounding.

Complies with the national 3C standard (certificates: 2020010903291852、2020010903291665)

Complies with energy-saving certification requirements (certificates: CQC21701284661、CQC21701284660)

- Special aluminum alloy mold, full aluminum frame;
- The screen can be adjusted freely from 0° to 45°;
- The main screen features a full lamination design, offering higher light transmittance and clearer image quality;
- Lifiable LCD screens available in three sizes: 15.6, 17.3, and 21.5 inches;
- The LCD screen lifting time is 19.5 seconds;;
- A rich RS485 command set is available, allowing control of lifting and screen menu adjustments;
- High-sensitivity 10-point capacitive touchscreen with high precision and no dead zones;
- Power is supplied through a daisy chain method, reducing power wiring;
- VGA, HDMI, and DVI three signal interfaces, which can be switched and used independently;
- Uses BOE original Class A ultra-narrow, high contrast, high-resolution screen base;
- Professional-grade color calibration to restore true colors;
- The lift system offers customization.



Abandoning sheet metal processing, precision CNC machining is used, and the frame is made from specialized integrated extruded aluminum profiles. The surface is treated with fully automated sandblasting to give it a unique gloss and matte texture. After sandblasting, the surface is finely polished and then immersed in an oxidation bath to increase surface hardness, making it more wear-resistant. It is not easily marked by fingerprints or other usage traces and does not discolor or scratch easily with long-term use.

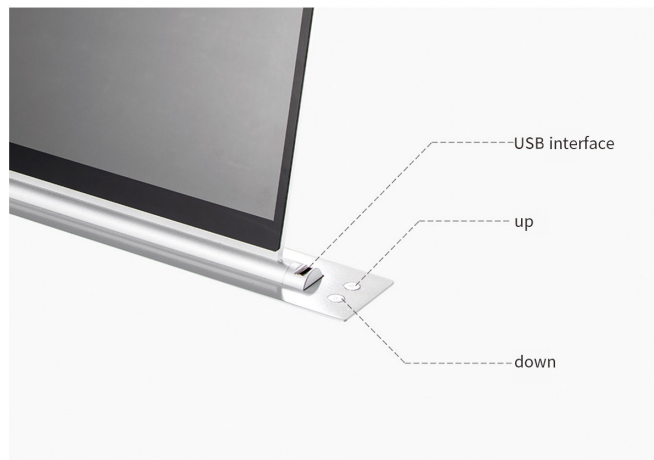


The screen uses a top-brand A+ grade LCD, eliminating the use of third-party assembled LCDs. The resolution is 1920×1080, brightness 300cd/m², contrast ratio 1200:1, 16.2M colors (6bits+FRC), and a 170° viewing angle (up, down, left, right). The thickness of the LCD panel is only 2.6mm. The screen features an aluminum profile backplate, with fully laminated ultra-thin tempered glass on the surface and supports capacitive 10-point touch.

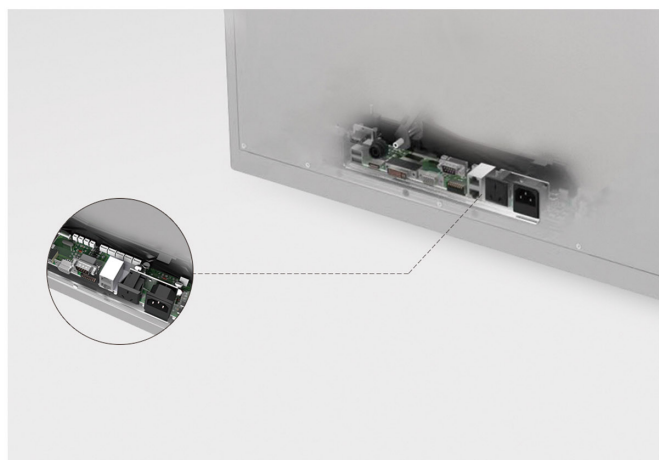


The liftable screen has a 0° to 45° tilt function, utilizing a high-torque AC permanent magnet synchronous motor with a specialized tilting structure. It includes structural limiters to prevent screen wobbling after tilting, greatly enhancing the interactive experience.

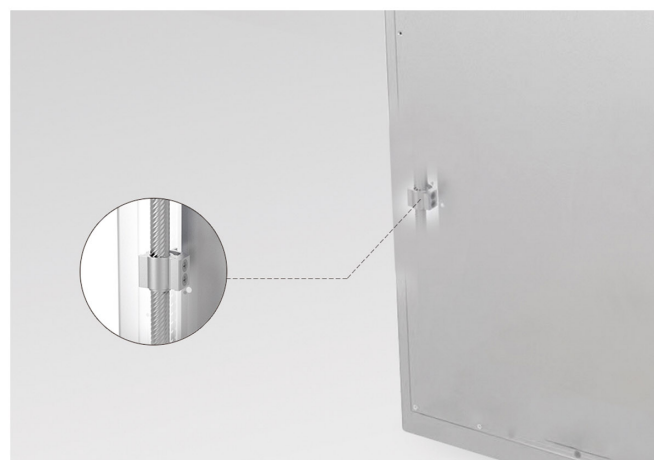
The back of the screen features a power button for the terminal computer.



The multifunctional integrated button with a backlight ring indicates the operating status of the lift system. It can be pressed with a force of 30N and used up to 50,000 times.

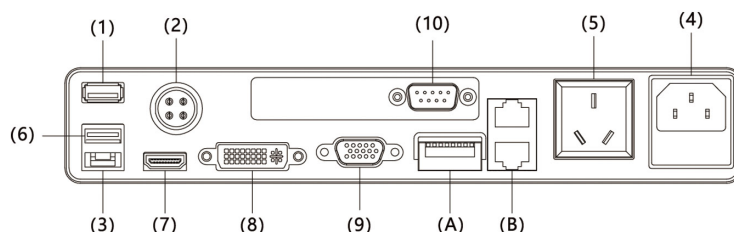


The integrated circuit control system uses an advanced chipset, providing high consistency and stability. It supports both command and manual button control, and allows one-touch switching between two HD digital video signals and one analog video signal, enabling multi-use of a single screen.



The lifting structure uses dual lead-screw drive, which is stable, silent, and durable, making it suitable for long-distance transportation and export by sea without concerns about structural stability. The drive motor is an AC permanent magnet synchronous motor, providing high torque, strong overload resistance, high efficiency, and excellent self-locking capability.

Interface function

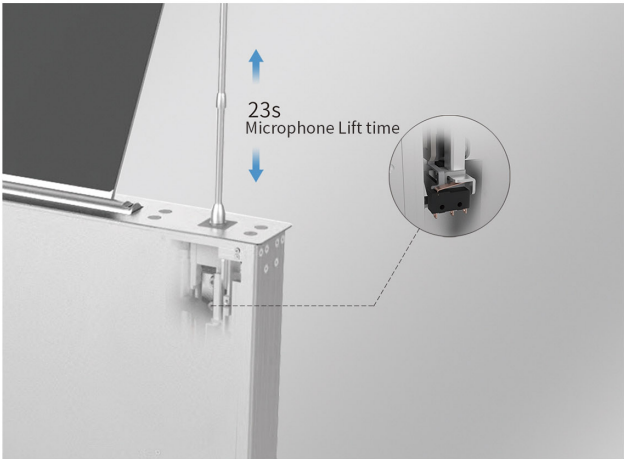


- (1) USB Relay Stick
- (2) Microphone Output (The interface for the LCD screen lift is empty)
- (3) Camera
- (4) Power Input
- (5) Power Output, supports daisy-chaining up to 10 lift systems
- (6) Touch USB

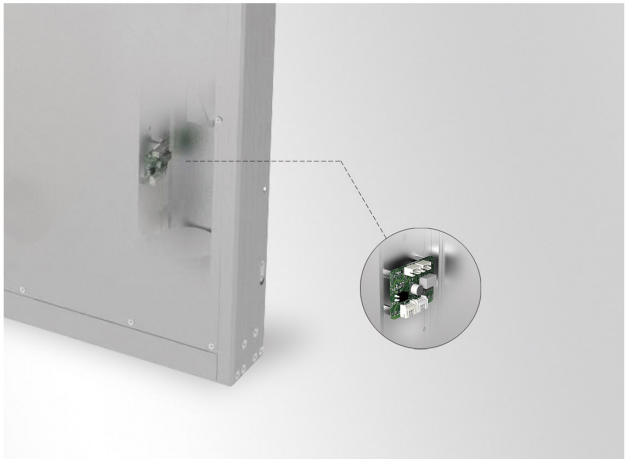
- (7) HDMI Input
- (8) DVI Input (Optional)
- (9) VGA Input
- (10) Power On/Off Interface (6-pin and 7-pin)
- (A) DIP Switch
- (B) 2 RS485 control interfaces, supports daisy-chaining devices



The lift system uses a silent motor, with very low noise during tilting and lifting operations.

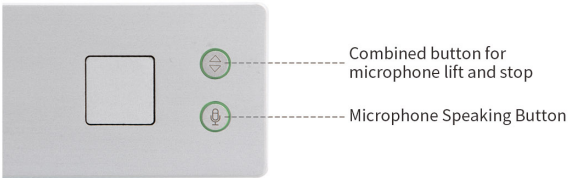


It integrates an anti-collision function for the microphone, automatically retracting when obstructed, providing better protection for the microphone.



It also integrates a microphone lowering mute function, preventing interference from noise.

Microphone Button Functions:



Microphone Lift:

Microphone Length	Standard length 320mm、380mm、450mm
Microphone Size	19mm~27mm
Lifting Time	16~25s （depends on the microphone length）
Mic Pickup Frequency	30Hz~20KHz （near CD-quality sound）
Mic Pickup Range	50cm



The electronic nameplate on the back of the display supports dual-side display with different content. The back can be configured with either a 10.1-inch LCD screen or a 7.5-inch e-ink screen.

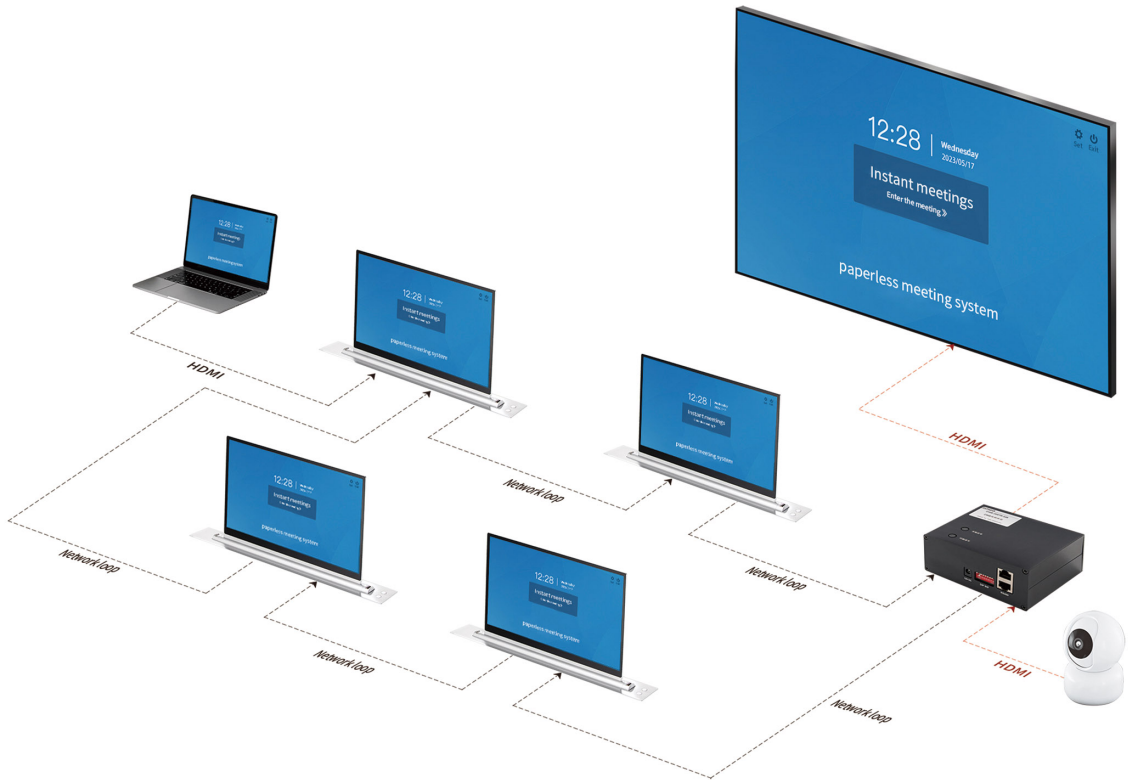
(The electronic nameplate is an independent system, which can be operated independently even without a paperless system.)

10.1 inch LCD Screen:

Screen Size	10.1 inch
Visible Area	222.7mm×125.3mm
Resolution	1024×600
Screen Brightness	300cd/ m ²
Contrast Ratio	800:1
Viewing Angle	85/85/85/85 (left/right/up/down)
Operating Temperature	-10°C~50°C

7.5 inch Tri-color Electronic E-Ink Screen:

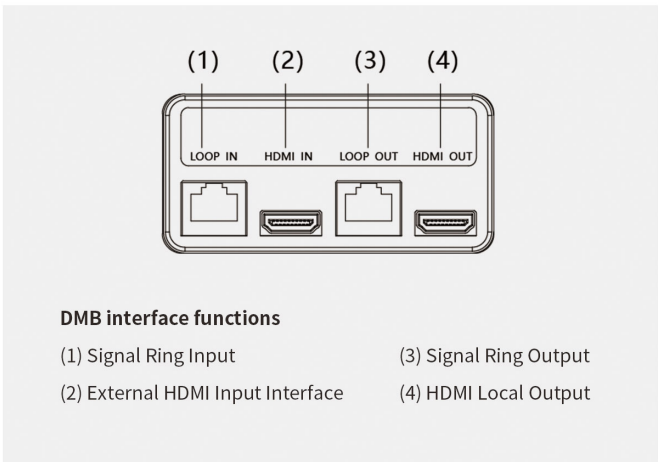
Screen Size	7.5 inch Tri-color Electronic E-Ink Screen
Visible Area	163mm×98mm
Resolution	800×480
DPI	125
Display Colors	black, white, red



DMB Zero-Latency Screen Sharing Conference System

DMB is used for multimedia signal screen sharing and interconnectivity. It allows for the connection of external laptops and audio/video inputs, achieving green and fast conference scenarios with video and audio lip-sync.

- By using the same screen for multiple multimedia signal sources, it enables lossless, latency-free, and stutter-free transmission of signals, employing the original FPGA chipset with custom low-level algorithms and CDR clock recovery technology. The bandwidth can reach 9Gbps, supporting up to 1080P;
- Any interactive terminal can serve as a video input (HDMI interface), enabling video synchronization sharing and large-screen display, such as conference camera signals or video conference signals;
- It uses pure network wiring to achieve interconnection and interoperability of various signals;
- Simple operation, no training required;
- External devices (laptops, tablets, mobile phones, USB drives) can be plug-and-play via HDMI and USB interfaces, with synchronized video broadcasting;
- The number of connected terminals is unlimited, and theoretically, thousands of terminals can be used simultaneously.





Product model	TIM-160	TIM-175	TIM-215	TIM-166T	TIM-176T
Screen Size	15.6 inches	17.3 inches	21.5 inches	15.6 inches	17.3 inches
Aspect Ratio	16:9(Widescreen)	16:9(Widescreen)	16:9(Widescreen)	16:9(Widescreen)	16:9(Widescreen)
Screen Resolution	1920×1080	1920×1080	1920×1080	1920×1080	1920×1080
Video Interface	VGA/HDMI/DVI	VGA/HDMI/DVI	VGA/HDMI/DVI	HDMI×2、VGA×1	HDMI×2、VGA×1
Video Switching	Button, Central Control Switching	Button, Central Control Switching	Button, Central Control Switching	Button, Central Control Switching	Button, Central Control Switching
Backlight Type	LED	LED	LED	LED	LED
Contrast Ratio	1200:1	800:1	3000:1	800:1	800:1
Response Time	20ms RT	30ms RT	6.5ms RT	16ms RT	16ms RT
Brightness	300cd/m ²	300cd/m ²	300cd/m ²	250cd/m ²	250cd/m ²
Viewing Angle	85/85/85/85 (Left/Right/Up/Down)	85/85/85/85 (Left/Right/Up/Down)	89/89/89/89 (Left/Right/Up/Down)	85/85/85/85 (Left/Right/Up/Down)	85/85/85/85 (Left/Right/Up/Down)
Lifting Accuracy	Horizontal ±0.2mm, Vertical ±0.2mm	Horizontal ±0.2mm, Vertical ±0.2mm	Horizontal ±0.2mm, Vertical ±0.2mm	Horizontal ±0.2mm, Vertical ±0.2mm	Horizontal ±0.2mm, Vertical ±0.2mm
Rear Enclosure	Aluminum alloy	Aluminum alloy	Aluminum alloy	Aluminum alloy	Aluminum alloy
Display Screen Size	358.7×221.3mm	408.5×256.8mm	496.4×291mm	358×221mm	398×251mm
Edge Thickness	≤ 6mm	≤ 6.5mm	≤ 8mm	≤ 7mm	≤ 9mm
Power Supply	AC-220V/1.2A 50Hz With power ring output	AC-220V/1.2A 50Hz With power ring output	AC-220V/1.2A 50Hz With power ring output	AC-220V/1.2A 50Hz With power ring output	AC-220V/1.2A 50Hz With power ring output
Power Consumption	≤ 50VA per unit	≤ 50VA per unit	≤ 50VA per unit	≤ 50VA per unit	≤ 50VA per unit
Lifting Time	18s	20s	23s	16s	17s
Load Capacity	≤ 3.5Kg	≤ 3.5Kg	≤ 3.5Kg	≤ 3.5Kg	≤ 3.5Kg
Total Weight	Net weight 10Kg, Gross weight 12.5Kg	Net weight 12.5Kg, Gross weight 15Kg	Net weight 18.5Kg, Gross weight 24Kg	Net weight 12Kg, Gross weight 14Kg	Net weight 14Kg, Gross weight 16Kg
Rack Dimensions	73×490×540mm	73×550×540mm	73×630×590mm	66×450×620mm	66×490×620mm
Panel Dimensions	73×490mm	73×550mm	73×630mm	66×450mm	66×490mm
Desktop Hole Dimensions	65×482mm	65×542mm	65×622mm	58×442mm	58×482mm
Tilting Angle	0-45°	0-45°	0-15°	0-35°	0-35°
Panel Color	silver/black	silver/black	silver/black	silver/black	silver/black
USB Interface	1	1	1	1	1
Front Panel	Non-touch screen	Non-touch screen	Non-touch screen	With touch screen	With touch screen

Functional modules can be combined as required.

Product content of catalogue advertisement please take the actual commodity as standard.
Without notification if manufacture changed.

Jomard Intelligent Technology Co., Ltd.

Website address: www.Jomard.com

Official Mall: meeting.jomard.com

Address: Room 210, No.14, Lane 1175, Tongpu Rd., Putuo District, Shanghai